

Trainee Assessment

Describe tooth notation and anatomy, dental caries,
and periodontal disease

US 27454 V2
Level 3 Credits 5

Name.....

careerforce

Trainee assessment

This trainee assessment contains:

- Instructions for the trainee
- Assessment tasks
- Feedback form
- Assessment result sheet

Tips for the trainee

Before you start this assessment you must read the instructions.

There are different areas of this assessment.

- The white boxes are for you to write in.
- The grey shaded areas are for the assessor to write in.
Please do not write in these boxes.

You need to sign a declaration at the back that this is your own work.

A person assessed as competent in this unit standard is able to:	Outcome	Task and evidence
Describe tooth notation and anatomy.	1	One – Written or spoken answer
Describe dental caries.	1	Two – Written or spoken answer
Describe periodontal disease.	2	Three – Written or spoken answer

Instructions for the trainee

- Your answers to the assessment tasks need to show the assessor that you have a full understanding of the topic. The assessor may require you to discuss your responses.
- This assessment is “open book”, which means that you can use any information you wish when you are completing this assessment. This information may include learning materials, books, the internet and your organisation’s policies and procedures.
- Your answers can be written or spoken.
 - When you write your answer, use pen in the space provided. Initial any alterations you make. Please write your name on any additional pages and attach them to the assessment.
 - When you answer verbally, the assessor will make full notes of your answer in the space provided in this assessment or may use a digital voice recorder.
- For any documents you supply, remove all identifying details of the people receiving services or support.

- You need to show that your work complies with your organisation's policies and procedures.
- If you require assistance with any aspect of the assessment, please contact your assessor.

Definitions of terms

The word **trainee** in this assessment refers to the person being assessed. Other terms that may be used are candidate, student or employee.

Person refers to a person accessing services in a health or disability setting in either a residential care facility or in a private home – the person’s own or a friend’s, group’s or family member’s. Other terms used for the person being supported include client, consumer, individual, resident, service user or tūroro.

Workplace assessor or **assessor** means the person who will assess the trainee.

Dental caries is a disease in which bacteria destroy hard tooth structure.

Periodontal disease is a bacterial infection of the gums and other tissues that attach to and anchor teeth to the jaws. It is caused by an accumulation of dental plaque on the teeth.

Primary dentition refers to deciduous teeth, often called “baby teeth”.

Secondary dentition refers to permanent teeth, often called “adult teeth”.

Abbreviations

ER refers to the evidence requirements of the unit standard – the evidence (descriptions, explanations, documents etc) that you must provide and/or the actions that you must do or demonstrate.

MER means “more evidence required”.

References

- Careerforce workbook – US 27454 Describe tooth notation and anatomy, dental caries, and periodontal disease.
- Your organisation’s policies and procedures.

Task One – Describe tooth notation and anatomy (written or spoken answer) ERs1.1 - 1.3

Question 1: What is meant by a notation system?

Assessor's use only

Notes and decision:



Question 2: What is the purpose of the FDI World Dental Federation Two-digit notation (ISO-3950 notation)?



Question 3: What is the maxilla?

Assessor's use only
Notes and decision:



Question 4: What is the mandible?



Question 5: What are the **four** main types of teeth? Please give their formal names, as well as any other names they may be known by.

1
2
3
4



Question 6: What is a cusp?



Question 7: Describe what is meant by “primary dentition”.

Assessor’s use only
Notes and decision:



Question 8: How many teeth does a child have, and what type of teeth are they?

Question 9: Describe what is meant by “secondary dentition”.


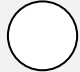

Question 10: How many teeth does an adult have, and what type of teeth are they?

Question 11: Please complete the following table, describing the type of tooth, and its purpose:

Assessor's use only
Notes and decision:



Description of type of tooth	What these teeth are used for	Assessor's use only Notes and decision:
<p>Incisors (front teeth)</p>		

Description of type of tooth	What these teeth are used for	Assessor's use only Notes and decision:  or MER
Premolars (bicuspid)		
Molars		

Question 12: Describe the **quadrant notation** used by the FDI World Dental Federation notation system.

Assessor's use only
Notes and decision:



Blank area for the answer to Question 12.

Assessor's use only area for Question 12, containing a circle for marking.

Question 13: What is meant by **two digit notation**, within the FDI World Dental Federation Two-digit notation (ISO-3950 notation)?

Blank area for the answer to Question 13.

Assessor's use only area for Question 13, containing a circle for marking.

Question 14: Please complete the following table by filling in the missing numbers or words on the lines.

Assessor's use only
Notes and decision:



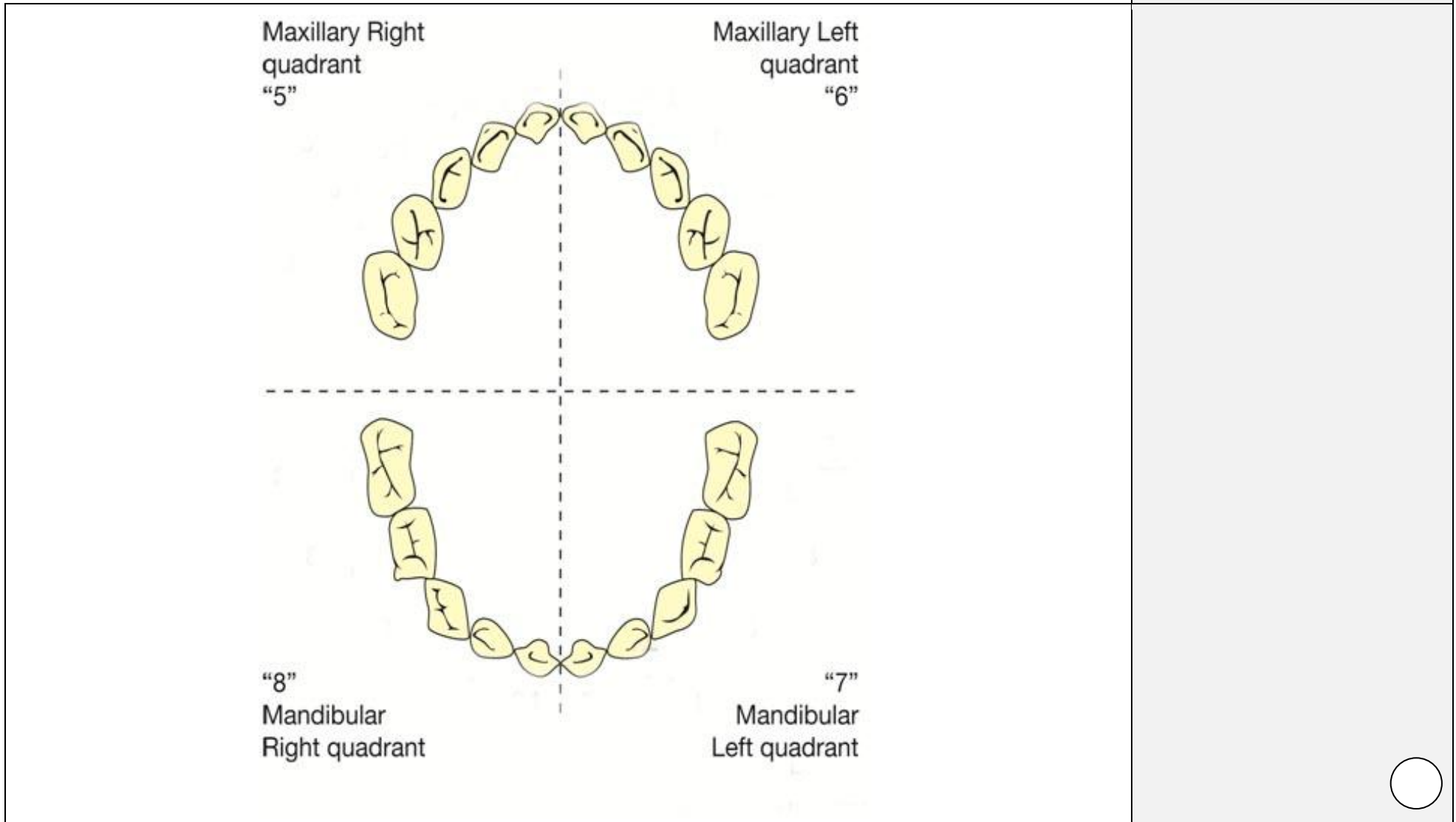
Quadrants		
<p>1 or 5</p> <p>-----</p>	<p>2 or 6</p> <p>-----</p>	
<p>-----</p>	<p>-----</p>	
<p>Lower-right or mandibular (lower) right quadrant</p>	<p>Lower-left or mandibular (lower) left quadrant</p>	
<p>Fill in the numbers for each quadrant</p>		
Primary dentition	Secondary dentition	



Question 15: Using the FDI World Dental Federation Two-digit notation (ISO-3950 notation), please fill in the numbers for the 20 teeth in primary dentition.

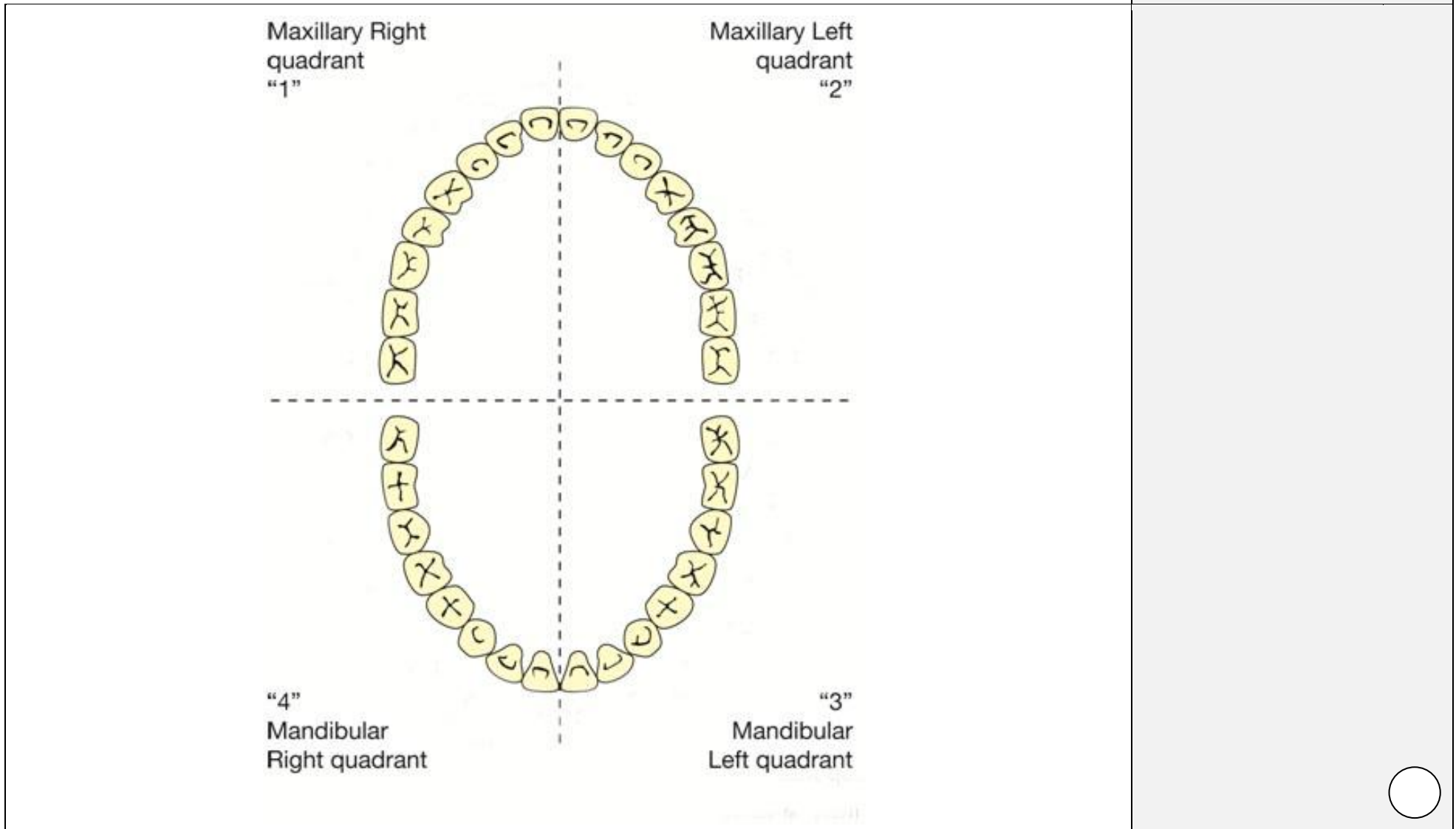
Assessor's use only

Notes and decision:



Question 16: Using the FDI World Dental Federation Two-digit notation (ISO-3950 notation), please fill in the numbers for the 32 teeth in secondary dentition.

Assessor's use only
Notes and decision:

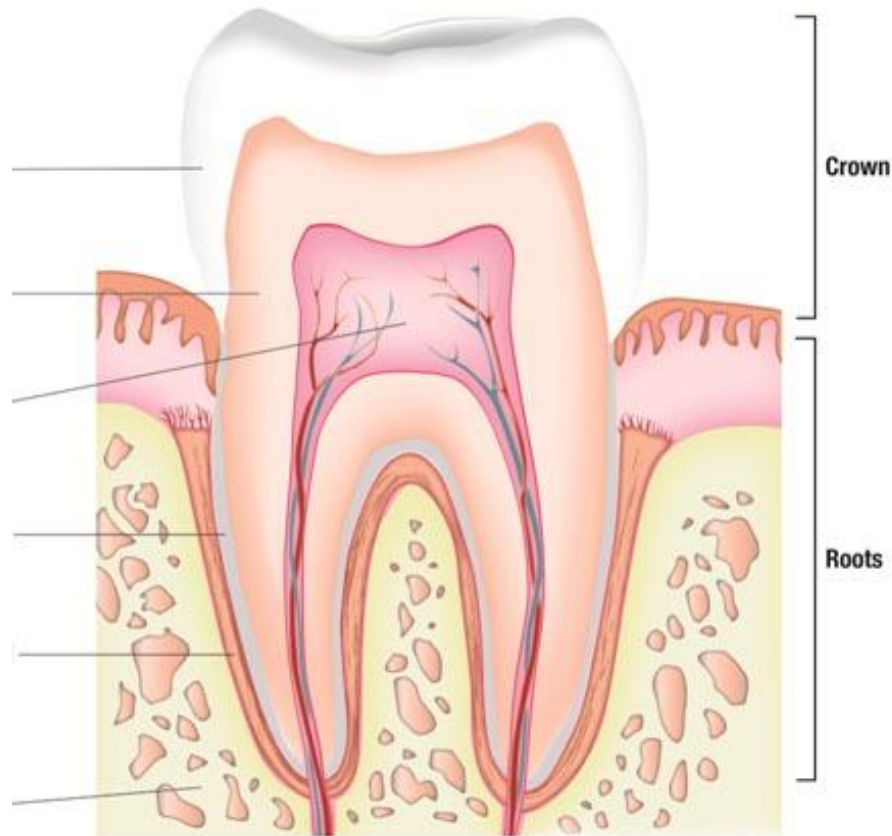


Question 17: Name each of the components in the structure of a tooth. There are **six** components to be labelled. Write the names by the lines.

Assessor's use only
Notes and decision:



Tooth Structure



Question 18: Describe each term and its role in the structure of the tooth.

Assessor's use only
Notes and decision:



Enamel



Dentine




Pulp



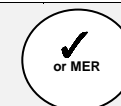
Cementum



	Assessor's use only Notes and decision: 
Periodontal ligament	<input type="radio"/>
Crown of a tooth	<input type="radio"/>
Root/s of the tooth	<input type="radio"/>
Bone	<input type="radio"/>

Question 19: Describe the location for each of the **five** named tooth surfaces.

Assessor's use only
Notes and decision:



Occlusal (incisal) surface



Mesial surface



Distal surface



Lingual or palatal surface



Task Two – Describe dental caries (written or spoken answer) ERs 2.1 - 2.2

Question 1: What are dental caries?

Assessor's use only
Notes and decision:



--	--



Question 2: Describe the **symptoms and causes** of dental caries.

--	--



Question 3: Describe the progression of dental caries.

Assessor's use only
Notes and decision:



Large empty rectangular box for the student's answer.

Large shaded rectangular box for the assessor's notes and decision.



Question 4: Describe personal and professional **management** of dental caries.

Assessor's use only
Notes and decision:



Large empty rectangular box for the candidate's response to the question.

Large shaded rectangular box for the assessor's notes and decision, with a small empty circle at the bottom right corner.

Question 5: Name the references you used to support your answers to the questions in Task Two.

Assessor's use only
Notes and decision:



--	--

	<input type="radio"/>
--	-----------------------

Assessor's feedback on the trainee's performance	
---	--

Task Two:	Achieved <input type="radio"/>	More evidence required <input type="radio"/>	Assessor's name:	Date:
Reassessment:	Achieved <input type="radio"/>	More evidence required <input type="radio"/>	Assessor's name:	Date:

Task Three – Describe periodontal disease (written or spoken answer) ERs 3.1 - 3.2

Question 1: What is **periodontal disease**? Please describe.

Assessor's use only
Notes and decision:



Blank area for written or spoken answer to Question 1.

Assessor's use only area for Question 1, including a circle for marking.

Question 2: Describe the **causes** of periodontal disease.

Blank area for written or spoken answer to Question 2.

Assessor's use only area for Question 2, including a circle for marking.

Question 3: Describe the symptoms and progression of periodontal disease. What are the **four** main stages of progression?

Assessor's use only
Notes and decision:



Empty rectangular box for the candidate's answer to Question 3.

Shaded rectangular box for the assessor's notes and decision, containing a small circle at the bottom right corner.

Question 4: Describe personal and professional **management** of periodontal disease.

Assessor's use only
Notes and decision:



A large, empty rectangular box intended for the candidate to provide their answer to the question.

A vertical rectangular box, shaded light grey, intended for the assessor to provide notes and a decision. It contains a small, empty circle at the bottom right corner.

Instructions for the trainee

When you have finished the assessment

- Please complete the trainee's declaration below.
- Please give your completed assessment and any additional material to your assessor. You might like to make a copy for your records.
- When you have been assessed as having achieved this unit standard, the results will be sent to Careerforce for registering credits on the New Zealand Qualifications Framework.
- Your assessor will give your assessment material back to you. Please keep it safe.
- If you wish to appeal against the assessment result or process, you should complete an "Appeal of Trainee Assessment Result Form". This form can be downloaded from the Shortcuts/Forms/Trainee Forms section of the Careerforce website www.careerforce.org.nz

Trainee's declaration

I was told about and understood the assessment requirements.

I have prepared my answers myself.

I agree that this document can be photocopied for the purpose of moderation, as part of quality control processes.

I agree that once the assessment decision has been made, my personal details and results will be sent to Careerforce for registering credits on the New Zealand Qualifications Framework.

Trainee's signature:

Trainee's name
(please print):

Date:

US 27454 V2 – Describe tooth notation and anatomy, dental caries, and periodontal disease

Please complete this feedback form to help us to improve our assessments.

Please respond to the questions with a tick in the relevant circle and with comments in the boxes.

	Yes	No	Sometimes
Did you think the assessment booklet was well laid out?	<input type="radio"/>	<input type="radio"/>	<input type="radio"/>
Did you find the assessment questions easy to understand?	<input type="radio"/>	<input type="radio"/>	<input type="radio"/>
What did you most like about this assessment?			
What did you least like about this assessment?			
If you could change something to improve this assessment, what would it be?			
Additional comments:			
Contact details (optional)			
Name:	Workplace:		
Phone:	Email:		

When you have completed this page, please pull it out, fold it in three, secure it with tape and send it (Freepost) to: Careerforce, PO Box 25 255, Christchurch 8144 Fax (03) 371 9285

Freepost Authority CONSULT

Careerforce
PO Box 25 255
Christchurch 8144

US 27454 V2 – Describe tooth notation and anatomy, dental caries, and periodontal disease

Level 3 Credits 5

Assessment result sheet (please print)

Trainee's information (completed by trainee)

Full name:

Employer:

NZQA number (NSN) if known: Date of birth:

Trainee's performance summary (completed by assessor)

Assessment tasks

✓ or MER (more evidence required)

Task 1

Task 2

Task 3

Comments/feedback to the trainee

Assessment result

I have assessed the trainee and confirm:

The requirements have been met to demonstrate competency in US 27454 V2.

Name: Assessor's number:

Signed: Date:

For the credits to be registered on the New Zealand Qualifications Framework, send a copy of this form to: Client Services, Careerforce, PO Box 25 255, Christchurch 8144

Client Services
Careerforce
PO Box 25 255
Christchurch 8144