

Numeracy

2023 Q4 Numeracy

Today's date:

Given name:

Family name:

Organisation:

Course:

Gender:

Female

Male

Diverse

Date of birth:

Is English your first language?

Yes

No

If No, what is your first language?

What ethnic group(s) do you belong to?

(For example, New Zealand European, Māori, Samoan, Tongan.)

Learner Identification (optional)

NSN:

SMS ID:

Instructions

This is an assessment of how well you understand numeracy problems.

The practice questions below help you to understand different sorts of numeracy questions. When you have finished the practice questions please turn the page and begin the assessment. You may need to wait for your tutor to tell you when to begin.

You need to choose the answer you think is best for each question. It is a good idea to read parts of the text again before choosing each answer.

Answer every question, even if you are not quite sure of the answer. If you change your mind about an answer, rub out the answer you chose and shade in your new answer. The questions are likely to get harder as you go through the book.

There is no time limit for the assessment. You will be given about 15 questions to answer.

Practice Unit



1 How many cakes are in the cake tray?

- A 10
- B 11
- C 12
- D 13



2 How many trays do you need to bake **24** cakes at the same time?

_____ trays



3 You have 3 of these trays. How many cakes could you bake altogether?

_____ cakes

Show your calculations below.

12

15

14

13

11



4 Write these five numbers in order from **smallest** to **largest**.

Smallest _____ **Largest**



5 Are the numbers below larger than 20?

Circle Yes or No for **each one**.

- | | | |
|------|-----|----|
| A 7 | Yes | No |
| B 23 | Yes | No |
| C 31 | Yes | No |
| D 18 | Yes | No |

END OF PRACTICE QUESTIONS

Netball 3

AUSTRALIA–NEW ZEALAND NETBALL CHAMPIONSHIP RESULTS					
Round 1 Results					
Game	Home Team	Goals		Away Team	Goals
1	Firebirds	48	vs	Fever	46
2	Mystics	44	vs	Tactix	48
3	Pulse	33	vs	Vixens	50
4	Swifts	53	vs	Steel	42
5	Magic	46	vs	Thunderbirds	42
Round 2 Results					
Game	Home Team	Goals		Away Team	Goals
1	Tactix	50	vs	Swifts	44
2	Vixens	62	vs	Firebirds	52
3	Magic	56	vs	Mystics	52
4	Fever	41	vs	Thunderbirds	54
5	Pulse	50	vs	Steel	52



1 By how many goals did the Vixens beat the Pulse in Round 1?

- A 13
- B 17
- C 20
- D 23
- E 27



2 By how many goals did the Tactix beat the Swifts in Round 2?

- A 6
- B 7
- C 10
- D 14
- E 16



3 After Rounds 1 and 2, what was the total number of goals scored by Magic?

_____ goals

Muffin trays 1



These muffin trays hold six muffins each.



- 4 Using 4 muffin trays, what is the **greatest** number of muffins you could bake **at the same time**?

- A 12 muffins
- B 15 muffins
- C 18 muffins
- D 24 muffins
- E 30 muffins



- 5 You want to bake 30 muffins **at the same time**.

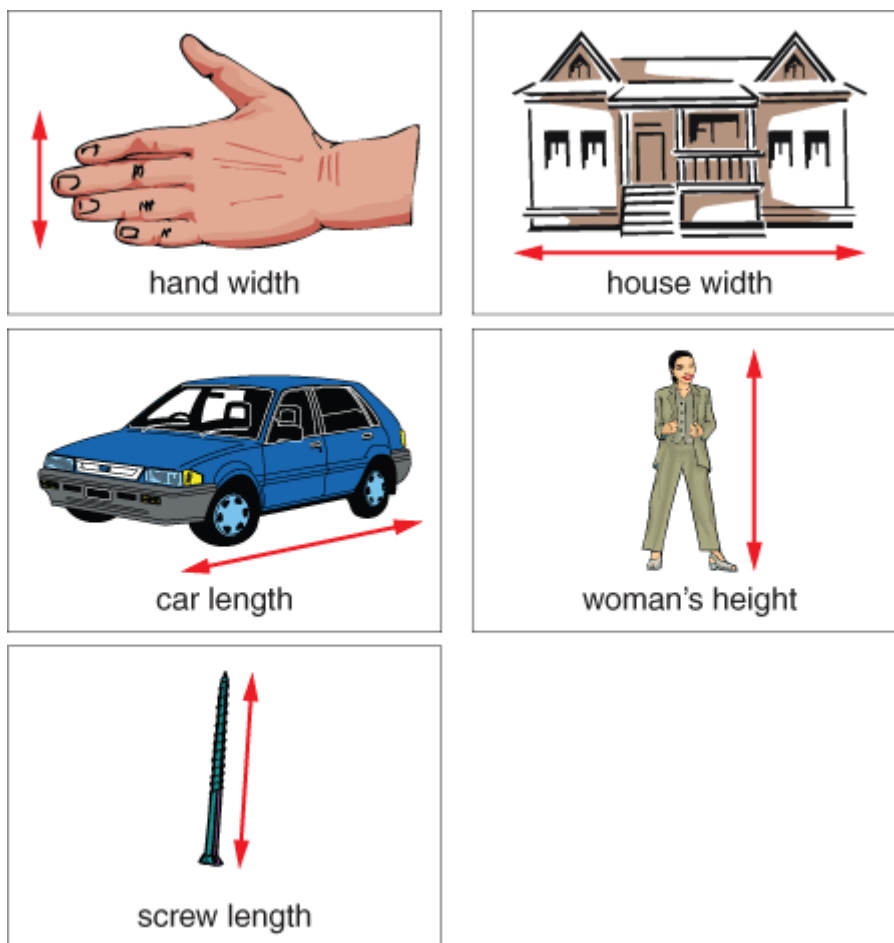
What is the **least** number of muffin trays you would need?

Choose which number

6 Which number has three tens and four units (ones)?

- A 33
- B 34
- C 43
- D 44
- E 304
- F 340

Lengths 2



Here are some pictures of real-world things. They are not drawn to scale.

- 7 In the real-world, which object would most likely measure 165 cm?
- A Hand width
 - B House width
 - C Car length
 - D Woman's height
 - E Screw length

Rainfall 2

MONTHLY AVERAGE RAINFALL WESTPORT Millimetres (mm)	
MONTH	RAINFALL
JANUARY	189
FEBRUARY	133
MARCH	171
APRIL	192
MAY	209
JUNE	199
JULY	187
AUGUST	187
SEPTEMBER	201
OCTOBER	200
NOVEMBER	183
DECEMBER	219

This is a table of average rainfall figures for Westport.



- 8 June has an average of 199 mm of rain. In which month is the average rainfall 10 mm higher?

- A January
- B May
- C October
- D December

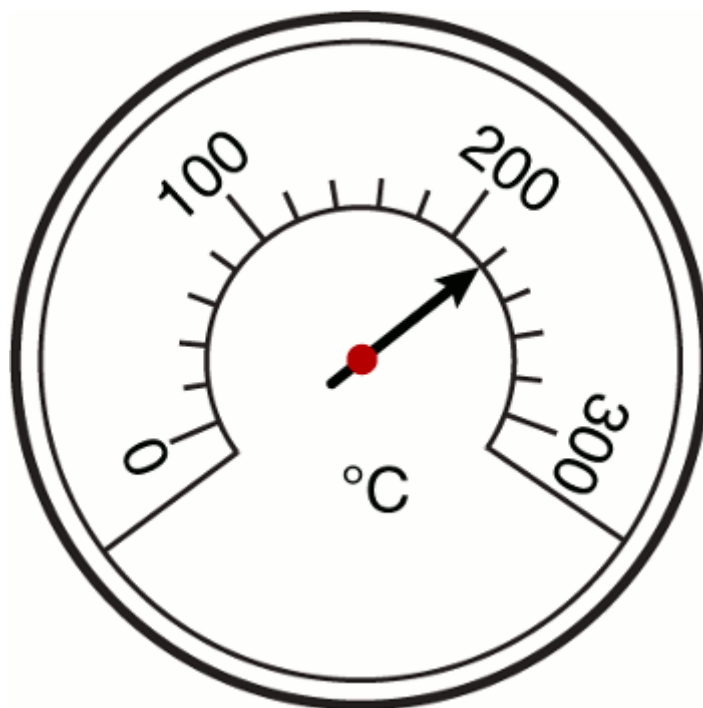
Multiples of 8



- 9 Which two numbers are both divisible by 8?

- A 50 and 56
- B 45 and 65
- C 48 and 64
- D 34 and 72
- E 80 and 28

Temperature gauge



10 What temperature does this scale show?

- A 200.1 °C
- B 201 °C
- C 202 °C
- D 210 °C
- E 220 °C

Queue for Tickets

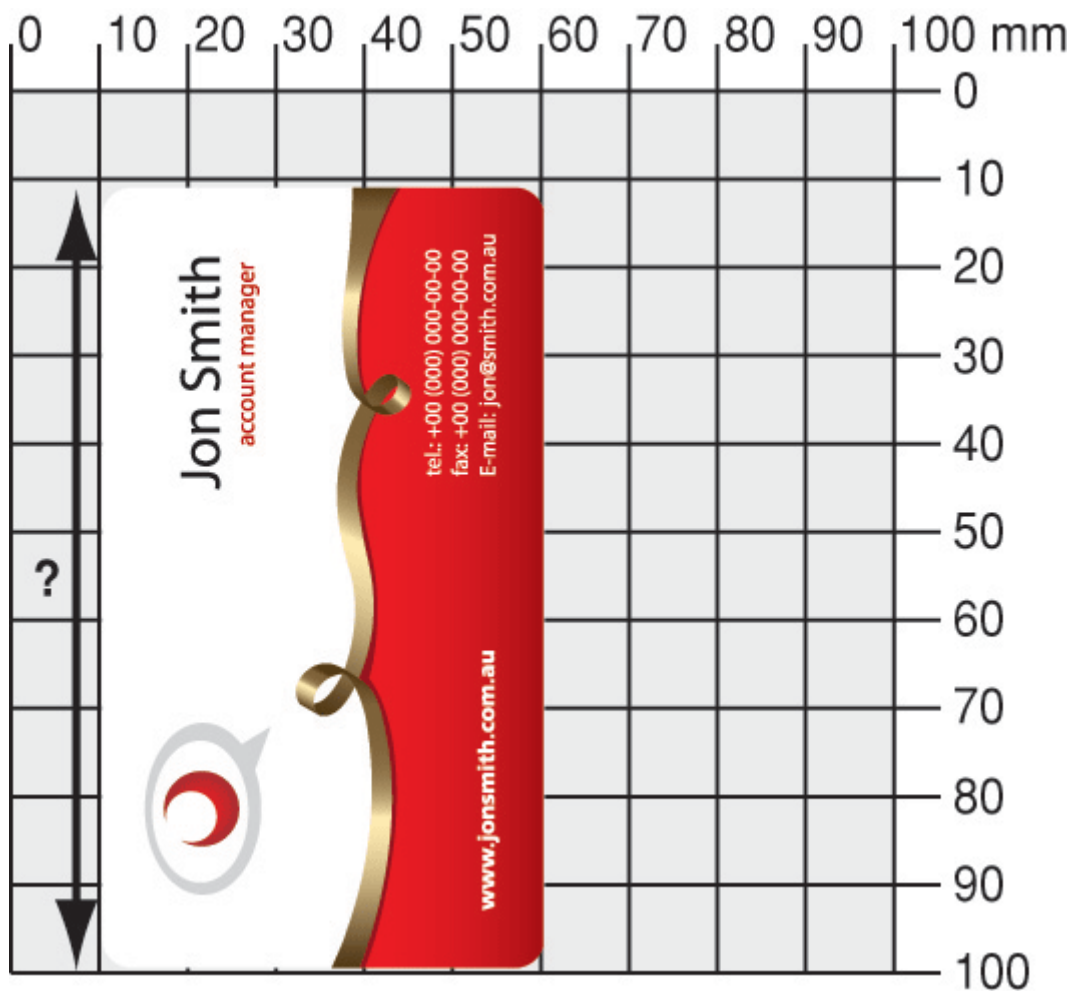


These 10 people are waiting to buy tickets.
One fifth of them buy tickets to the rugby.



- 11 How many of these people buy tickets to the rugby?
_____ people

Business card



Note: Not drawn to scale.

12 The length of this card is closest to

- A 70 mm
- B 80 mm
- C 90 mm
- D 100 mm

NZ population

Population of New Zealand <i>2006 Census</i>	
Male	1,965,618
Female	2,062,329
Total	4,027,947

The number of males and females in New Zealand in 2006 is shown above.

- 13 How many **more** females than males were there in New Zealand in 2006?

_____ females

Stacks of Booklets 2



Bill knows that 100 booklets weigh 12.4 kg.




14 How much does one booklet weigh?

- A 1,240 kg
- B 124 kg
- C 1.24 kg
- D 0.124 kg
- E 0.0124 kg
- F 0.00124 kg


Different multiplication methods

$7 \times 9 = 63$
 $60 \times 9 = 540$
So the answer is $63 + 540$



Aroha

$67 \times 10 = 670$
So the answer is $670 - 67$



Mohi

Two people were asked to calculate 67×9 in their heads **without** using pencil and paper or a calculator.



15 Who has a correct method of doing the exact calculation?

- A Just Aroha
- B Just Mohi
- C Both are correct
- D Neither are correct

Caregiver cleaning duties



Emma is a Personal Assistant. She spends **two-thirds** of her time doing cleaning duties.

- 16** If Emma works 18 hours in one week, how many of these hours are spent cleaning?

_____ hour(s)

END OF ASSESSMENT